

MicroCoat® SETUP GUIDE

MC800 Series

Configure your MC800 MicroCoat system
with tank, stand and control solenoid.

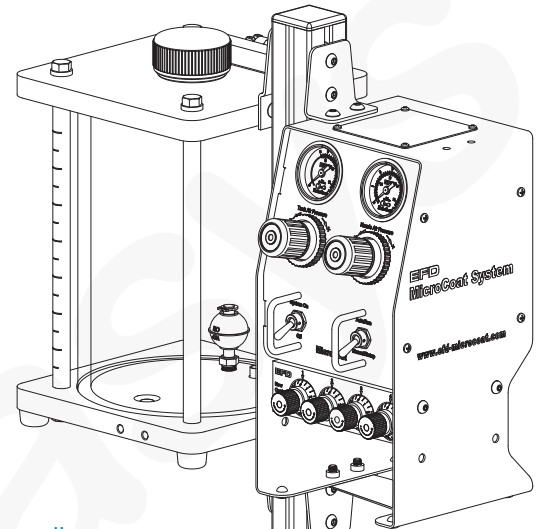


If trouble cannot be corrected, or if you need further assistance, please call us.

In the US, call 800.556.3484. In the UK, phone 0800 585733. In Asia, +86 (21) 3866 9006.

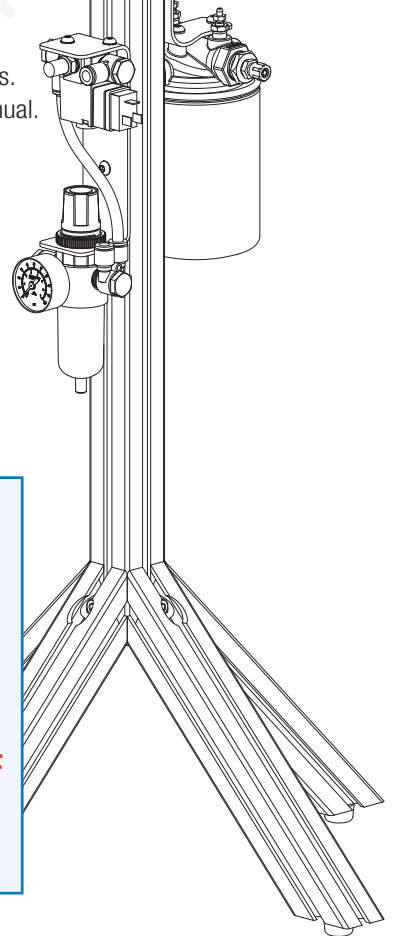
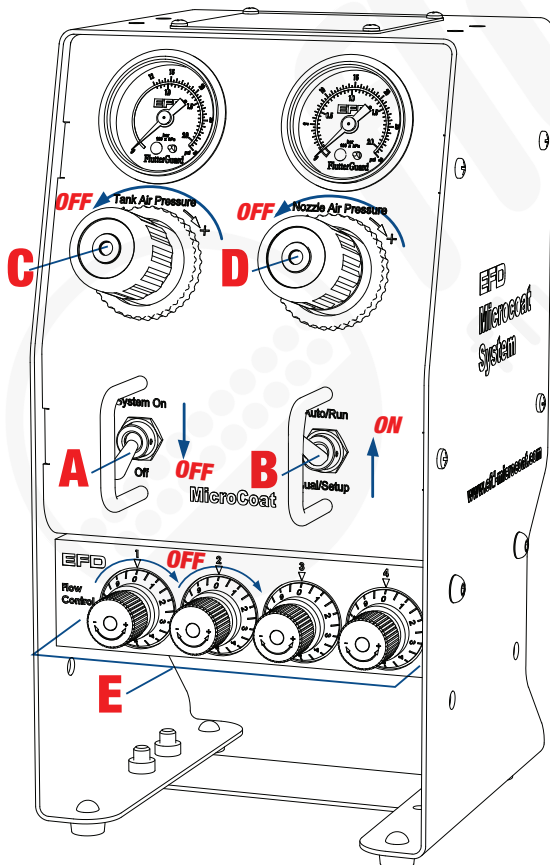
e-mail: info@nordsonefd.com www.nordsonefd.com

Sales and service of the MicroCoatSystem are available worldwide through Nordson EFD authorized distributors.
For detailed operating instructions and safety guidelines, please refer to your MicroCoat System Operating Manual.

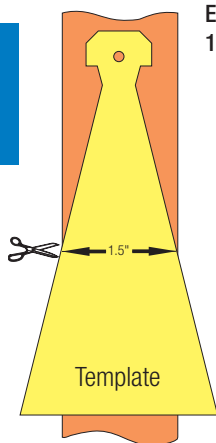


ATTENTION!
Confirm settings.

- A. System: OFF**
- B. Auto/Run: ON**
- C. Tank Air Pressure: OFF**
- D. Nozzle Air Pressure: OFF**
- E. All Flow Controls: OFF**

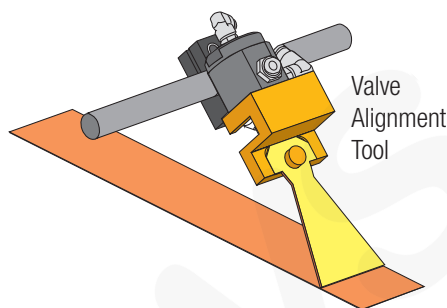
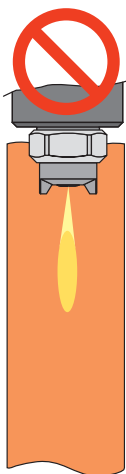


4

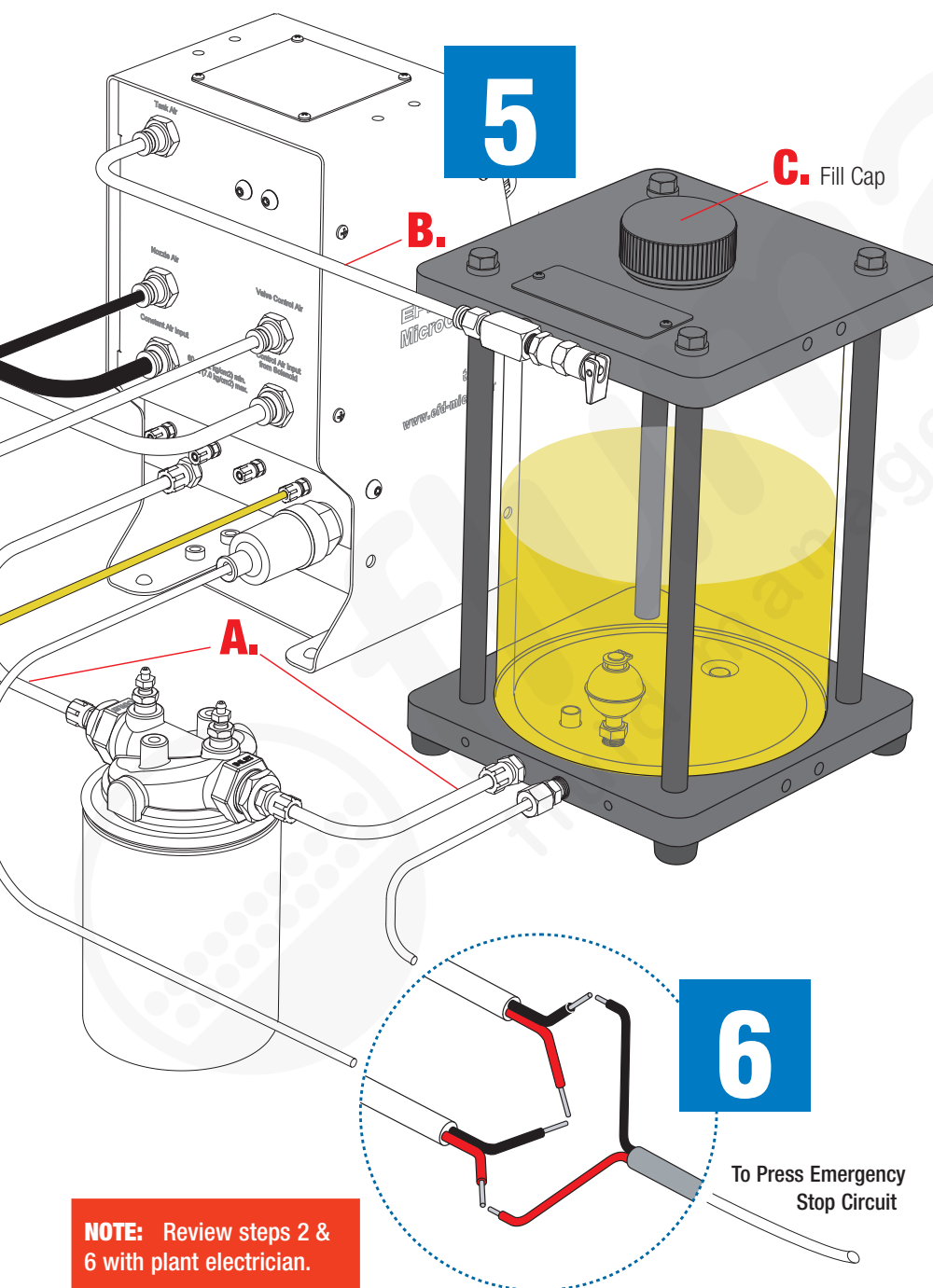


Example:
1.5" wide stock

Air Cap
alignment



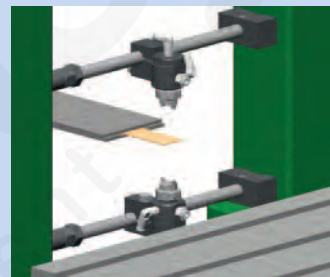
5



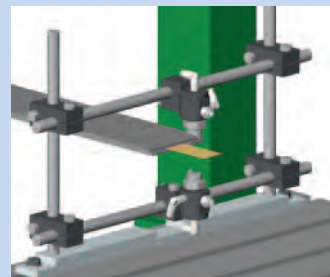
6

NOTE: Review steps 2 & 6 with plant electrician.

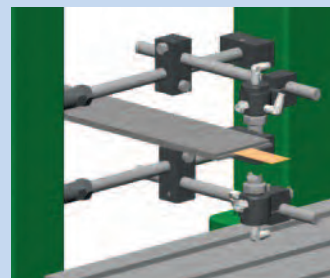
Fixturing



Expansion Mount Kit #7023864



Gantry Style Mount Kit #7023867



Extension rods (#7021098) and cross clamps (#7023862) are available. Contact EFD for details.

STEPS 7-9 ➤

- 1** Connect air filter regulator.
Set to 4.14 bar (60 psi).
- 2** Connect air solenoid to press run/clutch circuit.
Note: Solenoid included with pre-assembled systems.
- 3** Mount valves and manifolds. Connect color-coded hoses between controller, manifolds and valves.
- 4** Use valve alignment tool on valves to set distance from stock.
Note: MC785M (7008020)—use yellow template.
MC785M-WF (7008013)—use red template.
- 5**
 - A.** Connect reservoir and filter fluid lines to flow control inlet fitting.
 - B.** Connect reservoir pressure hose to tank air outlet on controller.
 - C.** Fill reservoir.
- 6** Connect in series with Press Emergency Stop Circuit. For dual tank installation, refer to your MicroCoat System Operating Manual.

WIRING CHART FOR EFD SUPPLIED SOLENOIDS

SOLENOID WIRES	BLACK	WHITE	GREEN
DC SOLENOID	POSITIVE (+)	NEGATIVE (-)	GROUND (≡)
AC SOLENOID	HOT	NEUTRAL	GROUND (≡)



For Nordson EFD LLC sales and service in over 30 countries, contact EFD or go to www.nordsonefd.com

East Providence, RI USA
USA & Canada: 800.556.3484;
+1.401.431.7000
info@nordsonefd.com

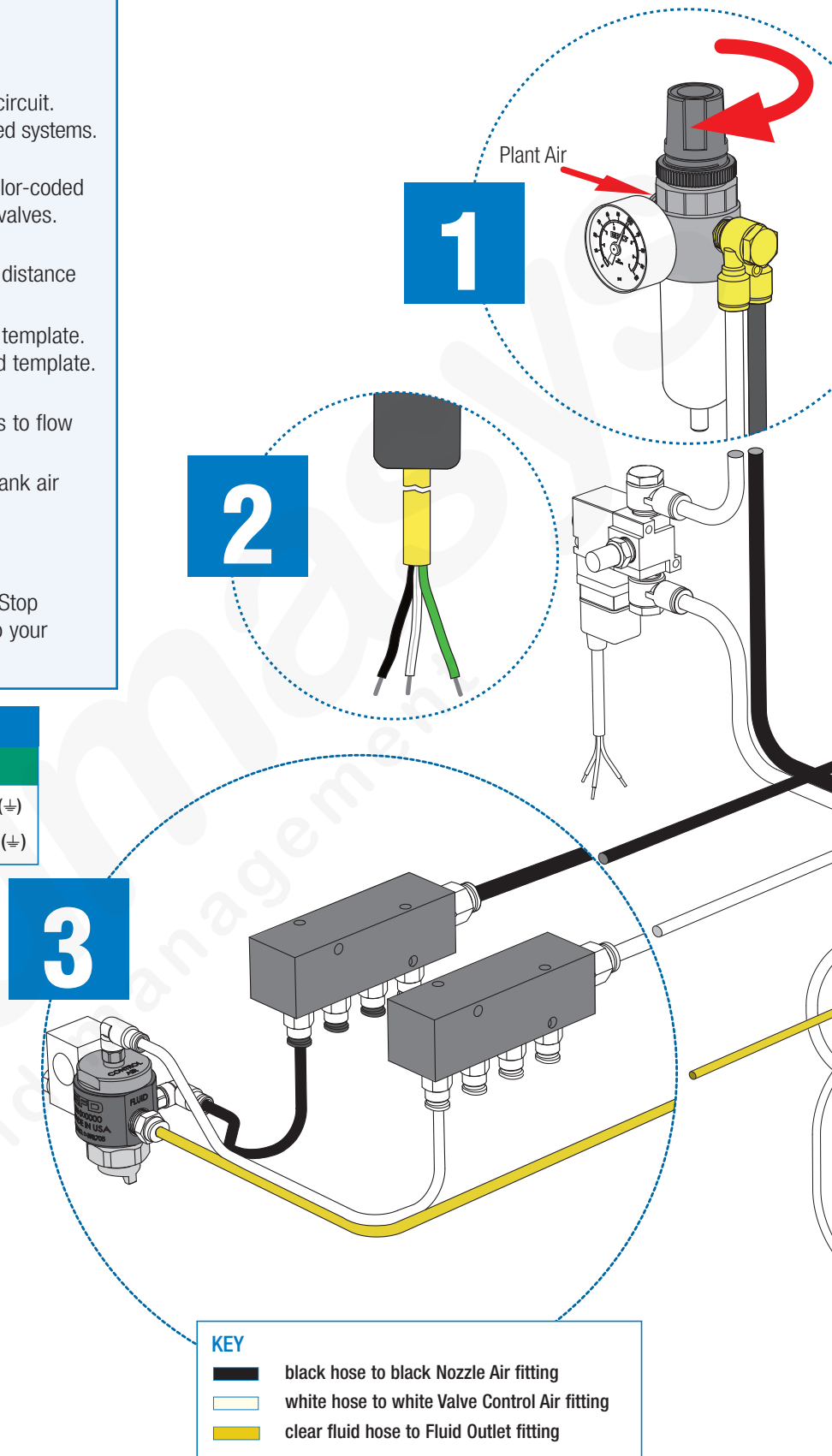
Dunstable, Bedfordshire, UK
0800 585733; +44 (0) 1582 666334
Ireland 00800 8272 9444
europe@nordsonefd.com

Nordson India Private Limited
+91 80 4021 3600 or Mobile: +91 98450 48481
india@nordsonefd.com

China: +86 (21) 3866 9006
china@nordsonefd.com

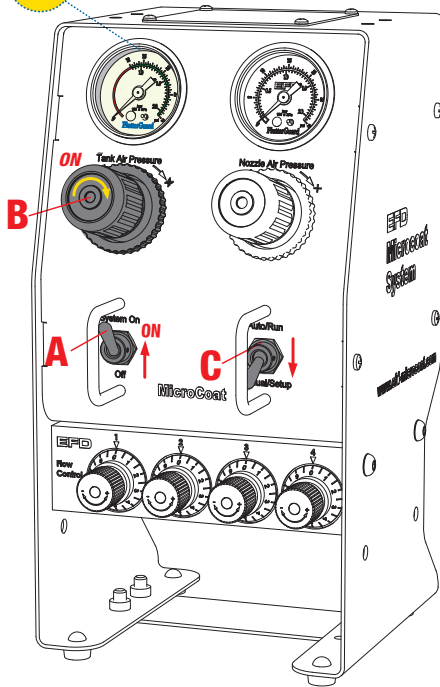
Singapore: +65 6796 9522
sin-mal@nordsonefd.com

©2013 Nordson Corporation 7023883 v112113

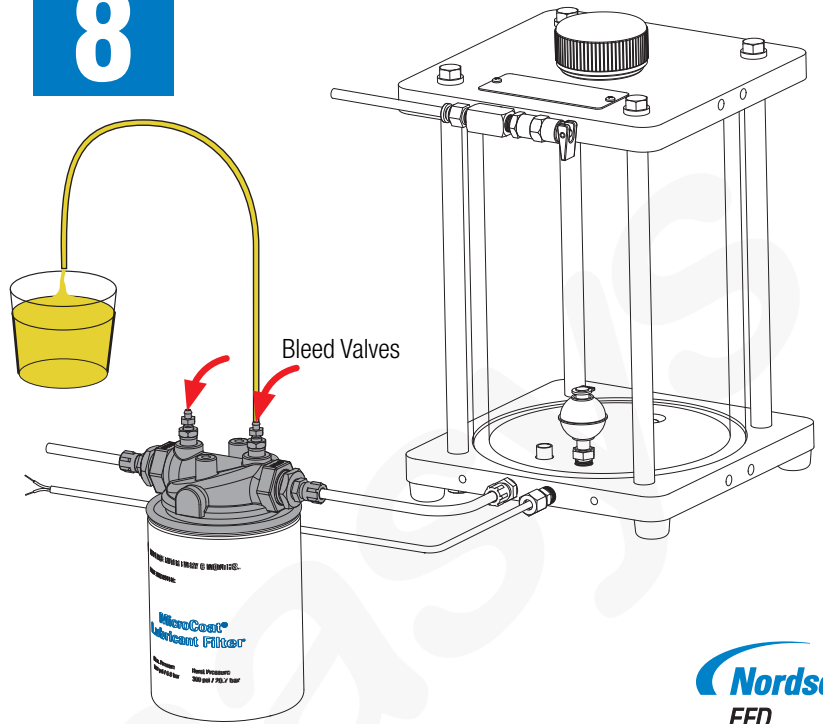


7

1.04

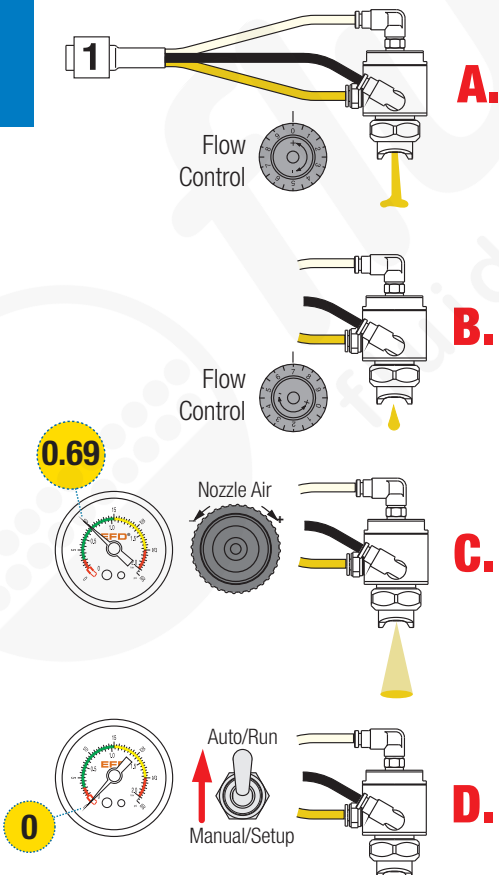


8



Nordson
EFD

9



7

- A.** System Pressure ON
- B.** Tank Air Pressure to 1.04 bar (15 psi)
- C.** Auto/Run to Manual/Setup

8

Clear the air from the lubricant filter. Insert tube into bleed valves.
Open bleed valves one at a time 1/2 turn. Once fluid flows from the bleed valves, close.

9

- Prime each valve.
- A.** Open each Flow Control five (5) full turns. When lubricant flows without any trace of air, close all Flow Controls.
- B.** Adjust Flow Controls so lubricant flows at about one drop per second. Use this setting as a starting point for all valves.
- C.** Turn Nozzle Air until pressure reads 0.69 bar (10 psi). Higher pressure provides finer spray. Too much pressure causes fogging.
- D.** SWITCH to Auto/Run. The valves stop spraying and the Nozzle Air pressure drops to 0 psi.

The system is ready.

When press is on, Nozzle Air pressure will return to 0.69 bar (10 psi), and valves will spray. Check lubricant coverage and make adjustments as necessary.